

REP

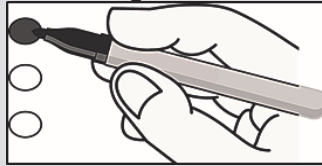
OFFICIAL REPUBLICAN PRIMARY ELECTION  
DAY BALLOT

Kiski  
Township-Orchard  
Hills North  
Ballot ID: 96

Armstrong County, Commonwealth of Pennsylvania  
Municipal Primary Election, May 20, 2025

Instructions to the Voter


Making Selections



1. TO VOTE YOU MUST COMPLETELY BLACKEN THE OVAL TO THE RIGHT OF YOUR CHOICE. An oval darkened indicates a vote for that candidate. Do not select more candidates than permitted in each race.
2. To cast a write-in vote for a person whose name is not on the ballot, blacken the oval beside the "Write-in" line and write his/her name legibly in the space provided.
3. If you spoil your ballot, DO NOT ERASE OR CROSS OUT, request a new ballot.

<b>JUDGE OF THE SUPERIOR COURT</b> (Vote for ONE)	<b>CORONER</b> (Vote for ONE)	<b>SCHOOL DIRECTOR AT LARGE IN THE APOLLO RIDGE SCHOOL DISTRICT</b> (Vote for not more THAN FOUR)
<b>MARIA BATTISTA</b> CLARION COUNTY <input type="radio"/>	<b>BRIAN K MYERS</b> RURAL VALLEY <input type="radio"/>	
<b>ANN MARIE WHEATCRAFT</b> CHESTER COUNTY <input type="radio"/>	Write-in <input type="radio"/>	<b>DOMINICK DUSO</b> <input type="radio"/>
Write-in <input type="radio"/>	<b>DISTRICT ATTORNEY</b> (Vote for ONE)	<b>MELANY E ANDREE</b> <input type="radio"/>
<b>JUDGE OF THE COMMONWEALTH COURT</b> (Vote for ONE)	<b>KATIE CHARLTON</b> SOUTH BUFFALO <input type="radio"/>	Write-in <input type="radio"/>
<b>MATT WOLFORD</b> ERIE COUNTY <input type="radio"/>	Write-in <input type="radio"/>	Write-in <input type="radio"/>
<b>JOSH PRINCE</b> BERKS COUNTY <input type="radio"/>	<b>SHERIFF</b> (Vote for ONE)	Write-in <input type="radio"/>
Write-in <input type="radio"/>	<b>FRANK PITZER</b> BETHEL <input type="radio"/>	Write-in <input type="radio"/>
	Write-in <input type="radio"/>	

<b>SUPERVISOR 6 - YEAR TERM</b> (Vote for ONE)	<b>JUDGE OF ELECTION</b> (Vote for ONE)
<b>ADDIE BIRCH JR</b> <input type="radio"/>	Write-in <input type="radio"/>
<b>JAMES J CIBIK</b> <input type="radio"/>	<b>INSPECTOR OF ELECTION</b> (Vote for ONE)
Write-in <input type="radio"/>	Write-in <input type="radio"/>
<b>SUPERVISOR 2 - YEAR TERM</b> (Vote for not more THAN TWO)	
<b>THOMAS TARDIVO</b> <input type="radio"/>	
<b>HERMAN (BOB) ROSS III</b> <input type="radio"/>	
<b>ADDIE BIRCH JR</b> <input type="radio"/>	
Write-in <input type="radio"/>	
Write-in <input type="radio"/>	
<b>TAX COLLECTOR</b> (Vote for ONE)	
<b>JENNIFER CARNES</b> <input type="radio"/>	
Write-in <input type="radio"/>	



Anthony J. Pheasant  
Pat Feltman

Members of the Board of Elections  
Armstrong County, Pennsylvania  
May 20, 2025

Vote Both Sides Of The Ballot